

*The Mesabi Range College  
Art Gallery Presents....*

**An Exhibition of Paintings by**

**Joan Beth Lewandowski**

**“Perspective on Eternal Purpose”**

*About the Artist...*

When as a child realizing that all my talents were gifts from the Great I AM, I dedicated my artistic abilities to the purpose of meditating on Him and all that He is. As a young adult, I earned a BA degree in Fine Art from Pacific University in Oregon with a studio arts major and musical dance theatre minor. After college, I started "Windows by Joan Beth" my first art business of seasonal window paintings in the Twin Cities. Then, moving to the Iron Range in 1984, I began taking commissions and painting canvases, called "Pick up Thy Palette". The door opened in 1998 for a banner ministry that included designing and sewing fabric banners and flags entitled "Bethspring Banners". Adding my dances, costume designs, musical instruments and vocal performance became "Joy in Worship" which I have had the privilege of taking to Israel for the last 5 years.

*About the Exhibit...*

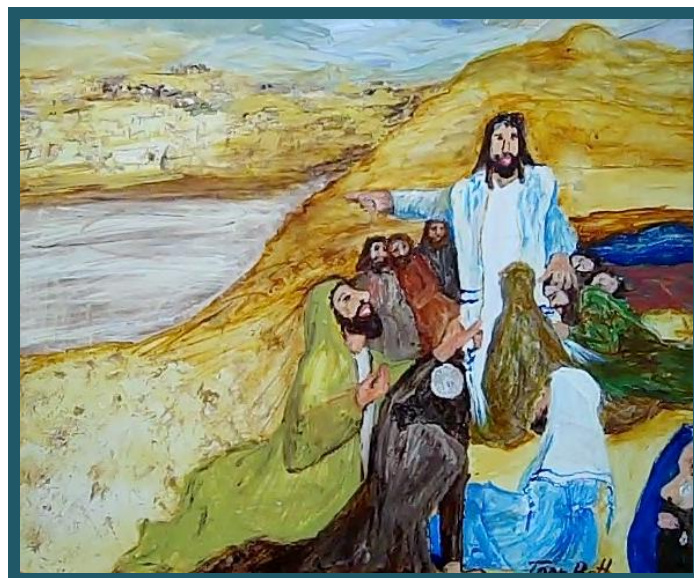
**Perspective on Eternal Purpose** is an expression of my impressions as a result of many years of Bible research, travel photographs, conversations with Jewish people, Israeli correspondents, keynote speakers, Hebraic foundations, viewing sacred art collections, international worship and volunteering experiences, explorer's documentation, Hebrew history, books on the Holy Land, world history, Israeli ministry reports, fellow artist's advice, Bible study authors, many reference books, much prayer, the Father's love, the Lord's leading, the Holy Spirit's inspiration, historical time-lines and current events.

**The works will be exhibited in the Mesabi College Library Art Gallery from  
November 9, 2009 through January 6, 2010**

*About the Book...*

I set out to write a book that gave a comprehensive view of the blessings, covenants, and promises. After 2 years of research, I decided that it needed illustrations. When I began drawing as well as selecting the subjects and topics, a theme began to present itself which became [Perspective on Eternal Purpose](#).

*A few of the Artist's Paintings ...*





Joan Beth Lewandowski

## *Artist's Reception...*

*Thursday, November 19*

*3:30 to 7:00 p.m.*

*Coffee, Cake and Book Signing by the Artist*

## *About the Mesabi Range College Art Gallery...*

The Art Gallery is situated within the Mesabi Range College Library, on the Virginia campus, located at 1001 Chestnut St. West. Recent remodeling has provided the Gallery with an open and light-filled space for displaying the works of local and regional artists and art groups.

Richard Saukko, Art Gallery director, installs four to six different shows in the course of an academic year. Artwork displays in the past have included paintings, photography, drawings, fiber arts and ceramics. Art work done by students in Mesabi Range College's art classes is the focus of the final show, held the last few weeks of each spring semester. A Gallery Reception is sponsored for some featured shows, and offers visitors a chance to meet and speak with the artist.

Between Art shows, the Gallery is filled with art works purchased by the college and funded through the "Percent for Art" initiative; art works that have been donated to the college by various artists throughout the years; and works with historical significance, such as paintings produced in the 1930's through the WPA program.

The public is especially invited to come on campus to view the works on display and enjoy the Art Gallery experience!

## *Art Gallery Hours and Location...*

Monday – Thursday 8:00 a.m. to 7:00 p.m.

Friday 8:00 a.m. to 4:00 p.m.

Closed weekends and holidays

Located in the Library at Mesabi Range College,

1001 Chestnut St. West

Virginia, MN 55792

